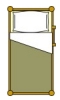


# Mountain View Mansion

## Floor Plan and Parking Map

The Mountain View Mansion is a luxurious property covering 1.6 acres of land. The main house and pool house offering over 20,000 sq. feet of space. In the following floor plan you will notice various symbols that represent sleeping areas and bed sizes. In addition to those listed we also have some extra mattresses that can be made up on the floors, especially of the upper level rooms, since they have so much open space. In rooms with multiple twins the beds can be pushed together for additional Queen sized beds.



- Bunk Bed (2 beds stacked)



- Twin Bed



- Full/Double Bed



- Queen or King Bed



- Bed with a Hide-a-Bed or Trundle underneath

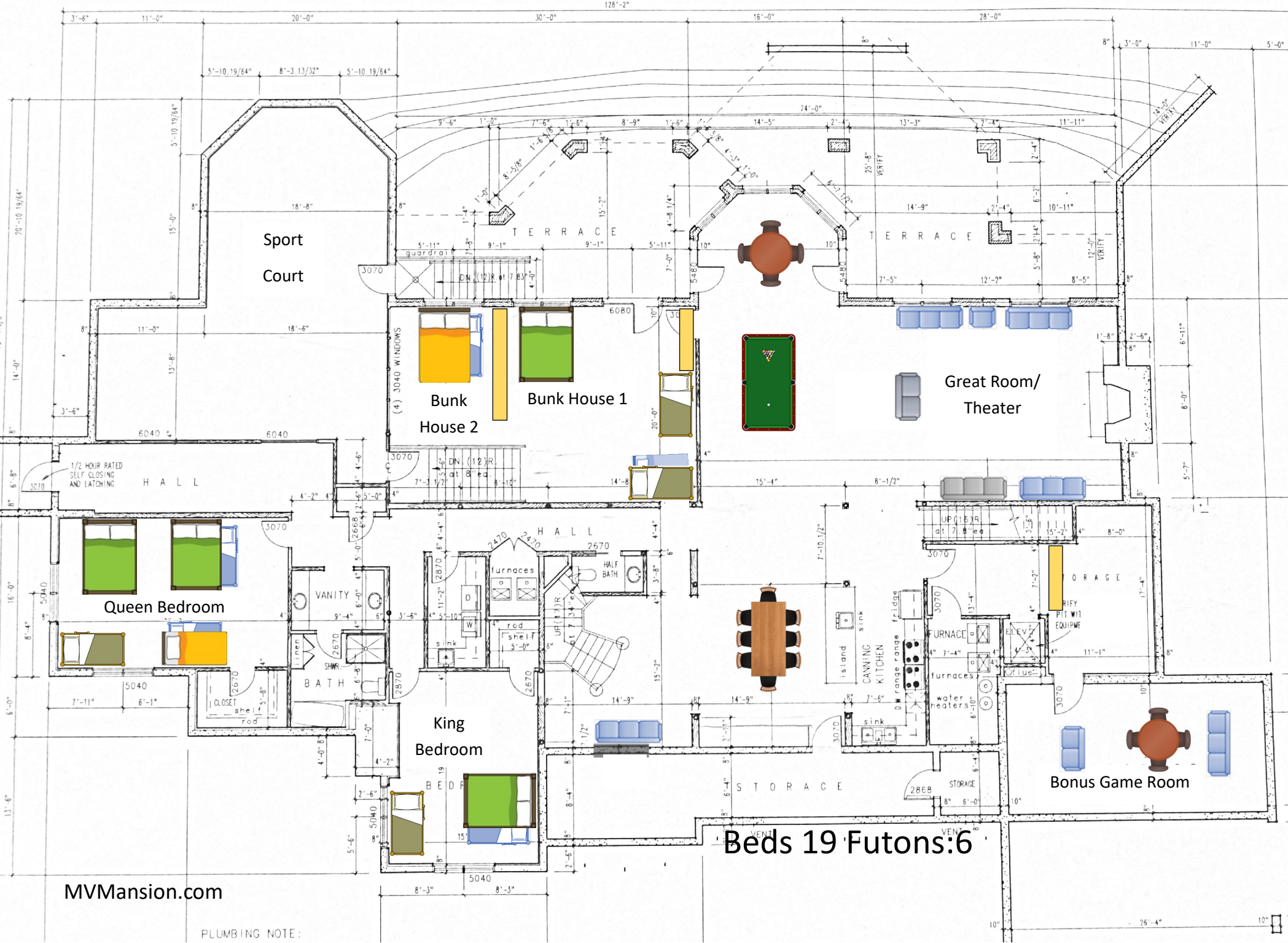


- Couch



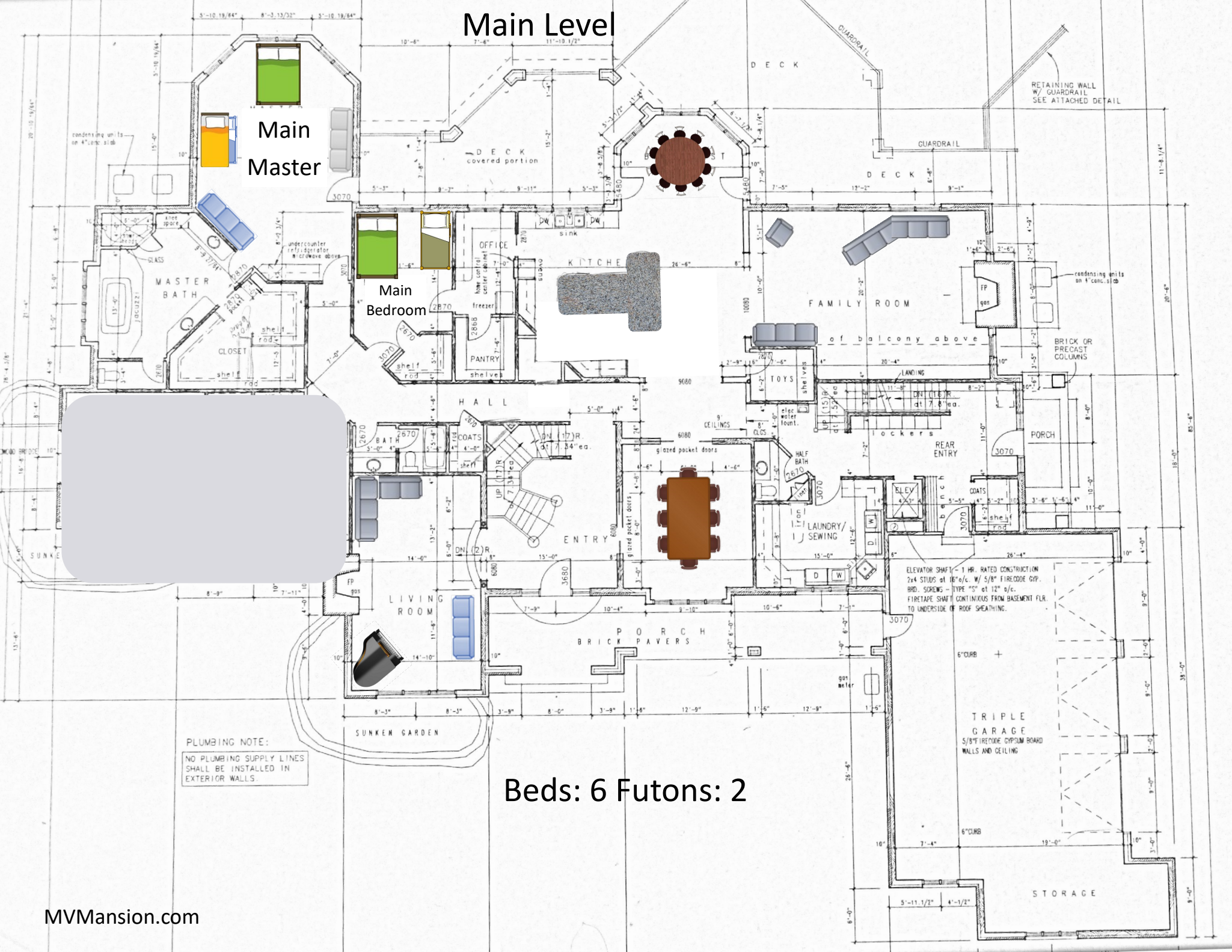
- Couch or Futon that will fold out/down into a double/queen bed

# Lower Level



**Beds 19 Futons:6**

# Main Level



Main Master

Main Bedroom

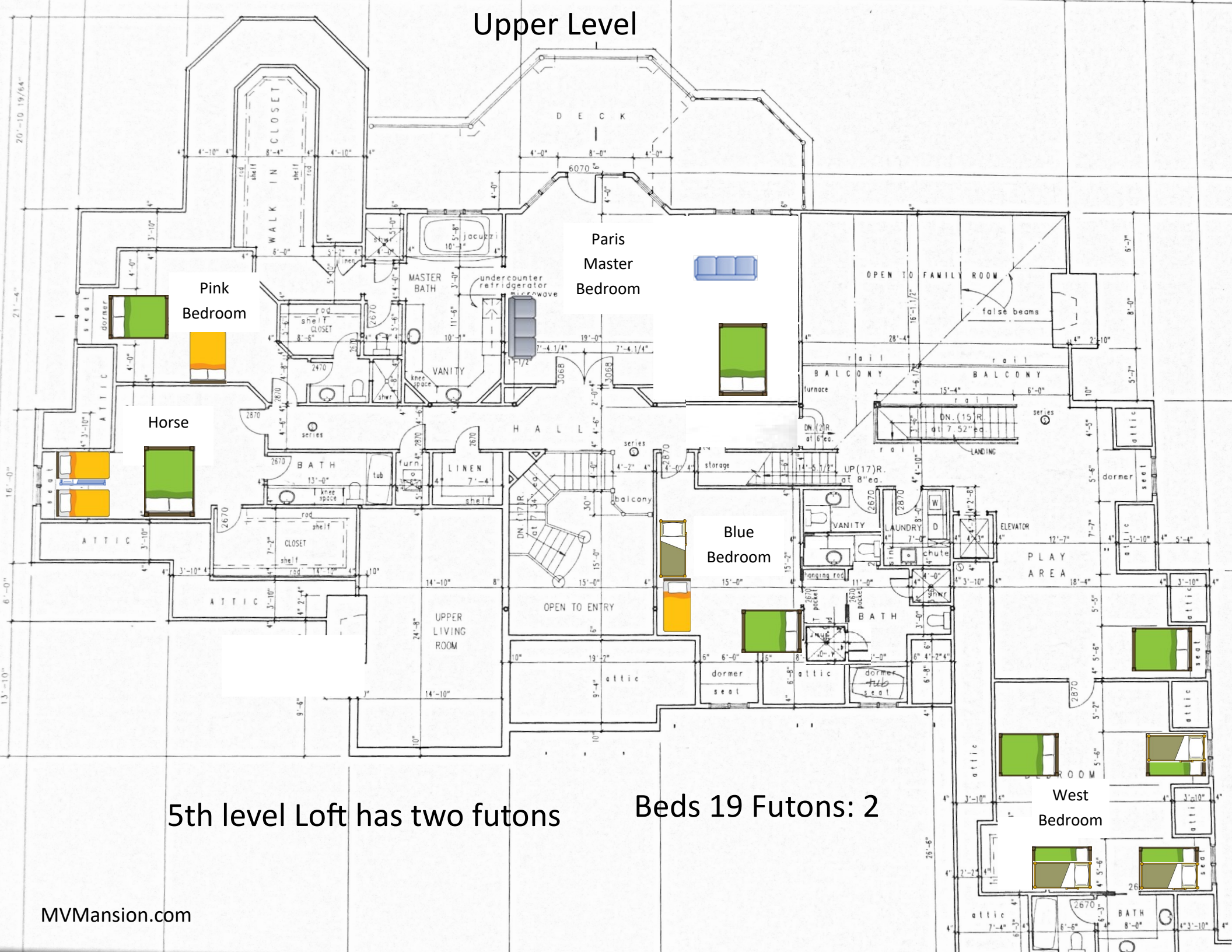
Beds: 6 Futons: 2

PLUMBING NOTE:  
NO PLUMBING SUPPLY LINES  
SHALL BE INSTALLED IN  
EXTERIOR WALLS.

ELEVATOR SHAFT - 1 HR. RATED CONSTRUCTION  
2x4 STUDS at 16" o/c w/ 5/8" FIRECODE GYP.  
BRD. SCREWS - TYPE "S" at 12" o/c.  
FIRETAPE SHAFT CONTINUOUS FROM BASEMENT FLR.  
TO UNDERSIDE OF ROOF SHEATHING.

TRIPLE GARAGE  
5/8" FIRECODE GYPSUM BOARD  
WALLS AND CEILING

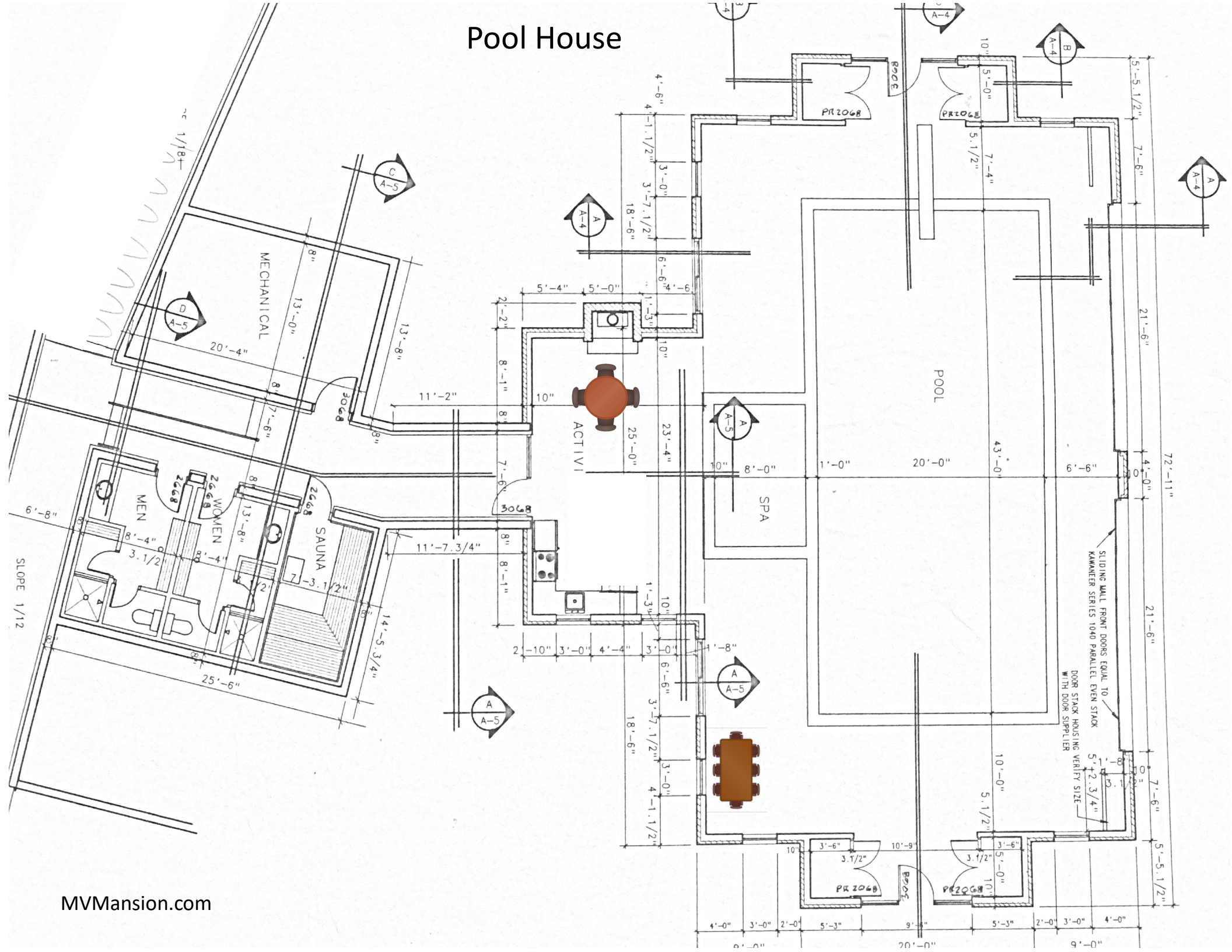
# Upper Level



5th level Loft has two futons

Beds 19 Futons: 2

# Pool House



Parking:

Please park first in the three car garage in the house,

Then diagonally in front of chalet (carriage house) diagonally as shown below.

Larger vehicles can park in the Carriage House Garage (30 ft deep, 12 feet high)

Please reserve parking in the front driveway for day guests only (if any)

No street parking please

Use South  
Gate ->

Day Guest  
Vehicles in  
front driveway

Main House  
Garage

Palisade Drive

Overflow and  
Large Vehicles



Oversized Garage



Enter ->

